

More grain and oilseed growers are buying grain carts to unload on the go

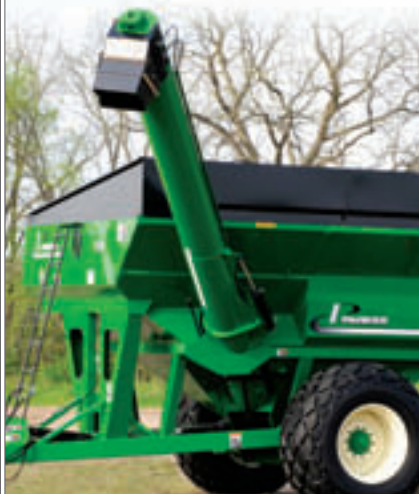
With grain carts, it definitely pays to spend time making the right choice.

Picking the right grain cart isn't simple, however. To start, you need to match the capacity of the cart with tractor size and your combine tank. There's also the inter-relationship between yield and field length, and a list of potentially valuable options too, including wide flotation tires or tracks, electronic digital weigh scales and powder coating.

Extra reach with Parker

Parker offers five grain cart models with capacities ranging from 500 to 1,000 bushels. The Parker 938 has an unloading capacity of approximately 8 bushels per second. The unloading auger has a 180-degree design, allowing it to fold over itself. This provides extra reach for the auger without adding width to the overall unit. The 938 is equipped with a hydraulic spout on the end of the unloading auger which discharges grain either straight down at a 90-degree angle or further outward away from the cart at a 128-degree angle, giving the operator more ability to place grain exactly where it needs to go.

www.allianceag.com/parker/graincarts.htm



J&M Grain Storm

J&M offers a plethora of grain cart models from small carts holding 525 bushels up to their biggest model with its 1,325-bushel capacity. According to J&M, their Grain Storm line features a narrow design for greater clearance between the combine head and the cart. The low-profile design makes loading the cart easier than ever. All Grain Storms feature their patented flow control spout for exact unloading. The hopper tank design enhances grain movement, assuring excellent cleanout even with high-moisture grain. To improve sight lines and boost efficiency, the J&M carts also feature corner augers that fold up toward the tractor cab, enhancing operator visibility.

www.jm-inc.com



Kinze Harvest Commanders

Grain carts at Kinze are called Kinze Harvest Commander Wagons, with capacities of 700 to 1,050 bushels. Unloading times for the Kinze 1050 is 2.1 minutes, the Kinze 850 2.3 minutes. Kinze emphasizes the simplicity of its grain wagons through its On-Demand Positive Drive System with no chains or sprockets for reduced daily maintenance. Kinze says there are no joints or ledges in the grain tank. The side and rear sloping joints are formed on the outside of the grain wagon, thereby enhancing grain flow.

www.kinze.com



Easy cleanout with Killbros carts

Killbros offers the 1950 and 1820 double-auger grain carts with 1,000-plus bushel capacities. The 1100 series single-auger grain carts are in the 500 to 1,000 bushel range. These Killbros grain carts are equipped with corner augers to ensure maximum visibility for convenient unloading for the operator. The Killbros grain carts are made with a lower sump placement, which enables steeper rear and front slopes for easy cleanout. The Killbros carts have hydraulically operated flow-control doors with metering gauges to give the operator better control over unloading. The 1195 Killbros will move grain at approximately 400 bushels/minute with its 17-inch corner auger.

<http://allianceag.com/killbros>



Unverferth auger options

Unverferth offers grain cart models equipped with side augers, double augers and corner augers. The Unverferth 1110 double auger grain cart has a 22-inch lift auger and a 20-inch floor auger. According to the company, this double auger design unloads the cart's 1,100 bushels in 80 seconds, thanks to a 280 hp static-rated direct drive gearbox that powers the unloading auger. It's fed by the chain driven 20-inch horizontal auger and enhanced by a reliable oiling unit and automatic tightener.

<http://www.unverferth.com>

Soft start with Brent

Brent offers grain carts equipped with single, double and corner augers. Brent also produces the Avalanche double-auger grain cart, which holds 1,500 bushels, and can unloaded in 105 seconds with a 300-hp plus tractor. Pictured is the Brent 780, which has a 750-bushel capacity. According to Brent, a patented self-aligning, indexed and rubber-cushioned "Soft Start" auger mechanism ensures a smoother startup of the upper and lower augers, which reduces stress and increases driveline life.

www.unverferth.com



Adjustable spout with Demco

Demco offers the 550, 650, 750, 850 and 1050 bushel grain carts. The Demco 1050 grain cart is driven by 1,000-rpm pto. It has an automatic over-running slip clutch driveline, which protects the auger drive and the PTO running to the tractor. The unloading auger is 18 inches with Demco's posi-drive coupler, which lessens noise when engaging. An adjustable spout on the Demco carts lets operators put the grain exactly where they need to.

